

NC ROTARY TABLE

Two-axis Tilting NC Rotary Table TW2180

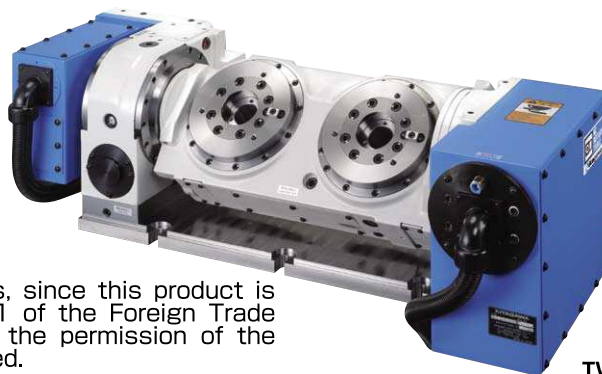
TW

High performance twin spindle tilting table

- Mountable to a compact M/C
- Smallest width in its class 999mm
- Built in rotary joint (option) allows simple and secure jig piping
- High clamping torque

*CE correspondence

※In the specifications of both two additional axes, since this product is applied to (8) of item 6 of a separate list No.1 of the Foreign Trade Control Ordinance, when exporting it overseas, the permission of the Ministry of Economy, Trade and Industry is required.



TW2180

Specifications

| Model | | TW2180 | |
|---|------------------------|--|------|
| Tilting angle | | -110° ~ +110° | |
| Table dia (mm) | | φ 180 | |
| Register diameter on Face Plate (mm) | | φ 65H7 | |
| Spindle through hole diameter (mm) | | φ 40 | |
| Distance between axes (mm) | | 250 | |
| Centre height at right angle on table face (mm) | | 200 | |
| Clamping method | Rotating axis | Pneumatic | |
| | Tilting axis | Air-Hydraulic | |
| Clamping torque (N·m) (In pneumatic 0.5MPa) | Rotating axis | 400 | |
| | Tilting axis | 800 | |
| Motor axis reduced inertia (kg·m ²) | Rotating axis | 0.000383 | |
| | Tilting axis | 0.00035 | |
| Servomotor (for FANUC specification) | | α iF 2/5000 | |
| Gear ratio | Rotating axis | 1/90 | |
| | Tilting axis | 1/180 | |
| Max. spindle speed | FANUC specification | Rotating axis (for min-1/motor 3000min-1) | 33.3 |
| | | Tilting axis (for min-1/motor 3000min-1) | 16.6 |
| | M signal specification | Rotating axis (for min-1/motor 3000min-1) | 33.3 |
| | | Tilting axis (for min-1/motor 3000min-1) | 16.6 |
| Allowable work inertia (kg·m ²) | | 0.12 | |
| Indexing accuracy (sec) | Rotating axis | 30 | |
| | Tilting axis | 60 | |
| Repeatability (sec) | | 4 | |
| Mass of product (kg) | | 247 | |
| Built-in rotary joint (as an option) | | RJ40TW2180 Rotation per axis Hydraulic per axis/Pneumatic 2-port + Exclusive Pneumatic 3-port | |
| Allowable Load | at horizontal (kg) | Rotation per axis | 30 |
| | at tilted (kg) | Rotation per axis | 30 |
| Allowable load (When clamped to table) | F (kN) | Rotation per axis | 5 |
| | F×L (N·m) | Rotation per axis | 800 |
| | F×L (N·m) | Rotation per axis | 400 |
| Allowable cutting torque | T (N·m) | Rotation per axis | 250 |
| Moment of tilting weight capacity | W×L (kgf·m) | 6 | |

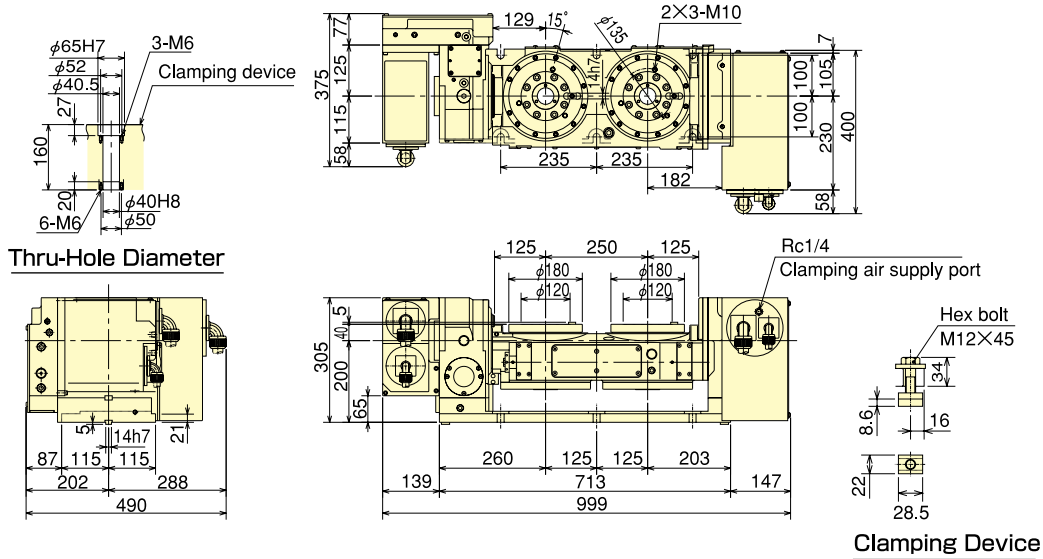
Note) 1. The switch for pressure checking is incorporated to all series except TC/DM of NC tables. 2. Solenoid valve(s) is (are) incorporated. 3. Neither cable nor hose is fitted between NC rotary table and machine tool... 4. Each product mass is determined by a Kitagawa M signal spec. 5. In case of additional axis spec., the position and type of supply port may be changed. Contact to Kitagawa on it separately.

TW 2 180 B R F *

| | | |
|-------------|------------------------------|--|
| Type | Table Size 180 | Design No. |
| | Number of tables 2 | Motor type (Double axes; same maker) Controller type V: Quinte specification |
| | | Option spec. R: Rotary Joint -: Non- option |
| | | Clamping method B: Rotating axis Air-Hydraulic Tilting axis Only Pneumatic |

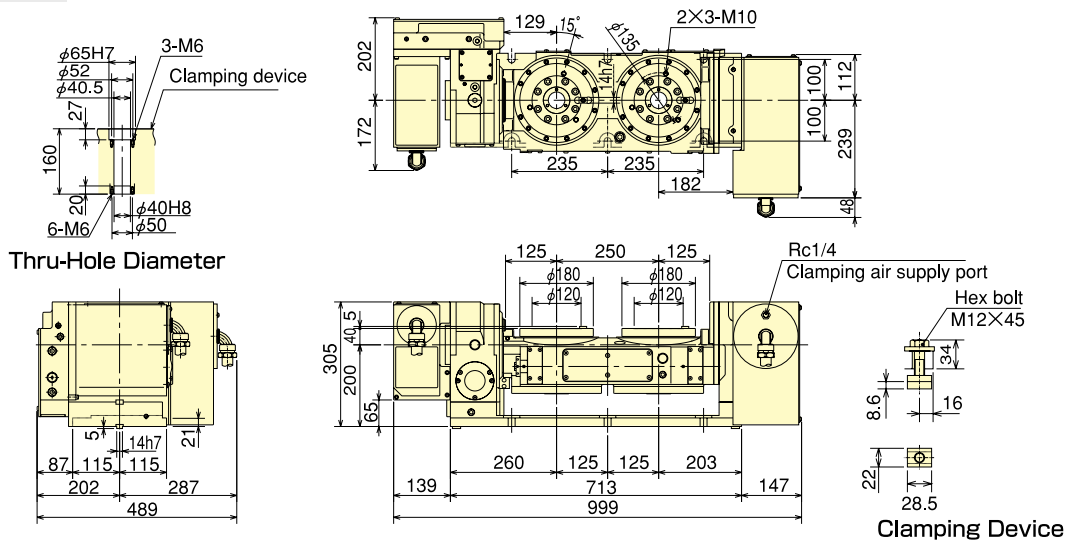
■Dimensions

TW2180 [4th axis specifications]



※Those dimensions may vary from motor to motor that is mounted. Confer with Kitagawa about clamping devices.

TW2180 [Kitagawa own controller] *The dimensions may vary from motor to motor that is mounted.



TW2180 [Kitagawa own controller] [with Rotary Joint]

