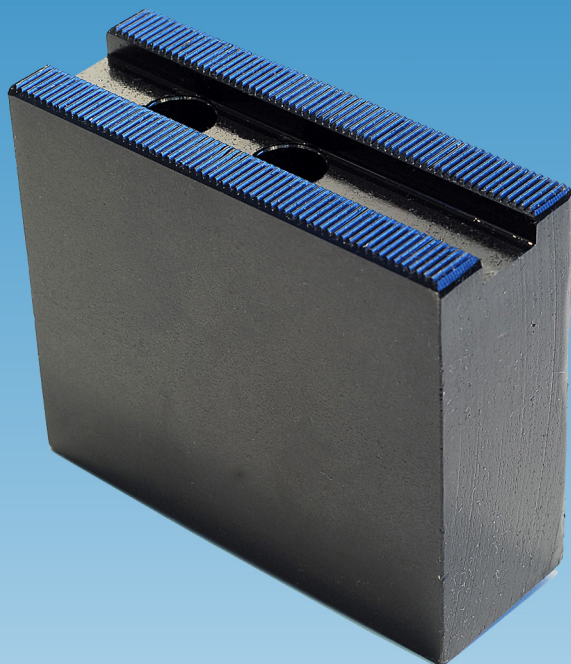


**NEW RANGE**

# KITAGAWA

## SOFT JAWS FOR KITAGAWA POWER CHUCKS TYPE KSJ



### STANDARD

Type	Chuck Type	Dia mm	H	W	L	T	C	Bolt Type	Version
KSJ 4	B-04	110	25	20	50	8	15	M6	II
KSJ 204	B-204	110	22	22	50	10	14	M8	II
KSJ 5	B-05	135	30	23	55	10	18	M8	II
KSJ 205	B-205	135	30	22	57	10	14	M8	II
KSJ 6	B-06/B-206	169	32	30	70	12	20	M10	II
KSJ 8	B-08/B-208	210	38	35	95	14	25	M12	II
KSJ 10	B-10/B-210	254	42	40	110	16	30	M12	II
KSJ12	B-12	304	50	50	129	18	30	M14	I
KSJ 212	B-212	304	50	50	129	21	30	M16	I
KSJ 15	B-15	381	70	60	165	22	43	M20	I

Serrations 1.5mm x 60

### EXTRA HIGH

KSJ 204H	B-204	110	50	25	50	10	14	M8	II
KSJ 205H	B-205	135	50	22	57	10	14	M8	II
KSJ 6H	B-06/B-206	169	50	30	72	12	20	M10	II
KSJ 8H	B-08/B-208	210	80	35	95	14	25	M12	I
KSJ 10H	B-10/B-210	254	80	40	110	16	30	M12	I
KSJ12H	B-12	304	80	50	130	18	30	M14	I
KSJ 212H	B-212	304	80	50	130	21	30	M16	I

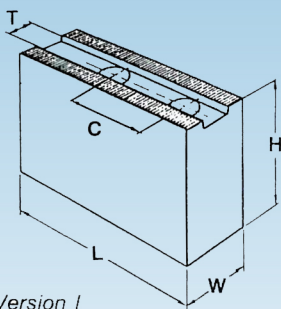
Serrations 1.5mm x 60

### EXTRA LONG JAW

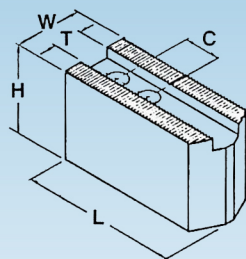
KSJ 6L	B-06/B-206	169	30	30	81	12	20	M10	II
KSJ 8L	B-08/B-208	210	40	35	102	14	25	M12	II
KSJ 10L	B-10/B-210	254	38	38	123	16	30	M12	II
KSJ 212L	B-212	304	50	50	145	21	30	M16	I

Serrations 1.5mm x 60

Kitagawa T-Nuts, gripper jaws, base jaws, quick change jaws and workpiece stops are available on request.



Version I



Version II

# KITAGAWA

EUROPE LTD

Unit 1, The Headlands,  
Downton, Salisbury, Wiltshire, SP5 3JJ, UK

Tel: +44 (0) 1725 514000

Fax: +44 (0) 1725 514001

Email: [uk@kitagawaeurope.com](mailto:uk@kitagawaeurope.com)