



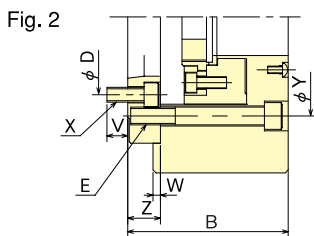
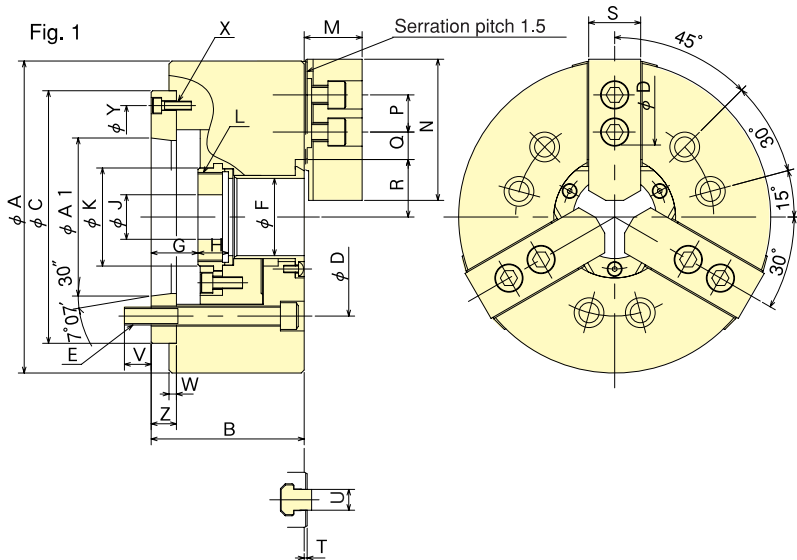
**CHUCK**

# Large Thru-Hole High Speed Power Chuck (Direct Mount) B-200A series

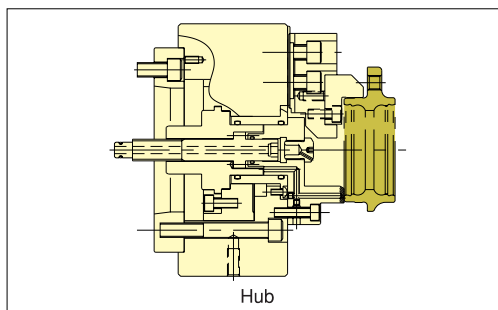
Chuck Adaptor suit to Spindle Nose is equipped  
Globally acknowledged standard chuck



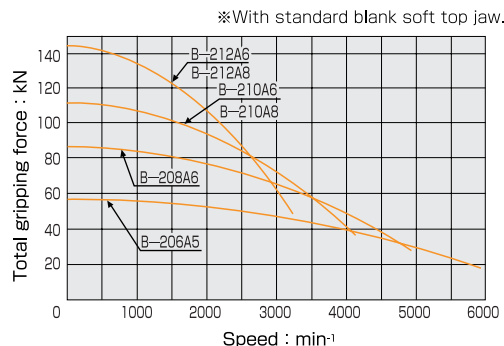
## Dimensional Drawings



## Gripping Example



## Gripping Characteristic Graphs



## Dimensions

※B-210A6, B-212A6 are referred to in Fig.2. ※Blank draw nut equipped.

Dimensions Model	A	B	C	D	E	F	G max.	G min.	H	J	K	L max.	M	N	P	Q max.	Q min.	R max.	R min.	S	T	U	V	W	X	Y	Z	A1
B-206A5	169	91	140	104.8	6-M10	45	26	14	19	20	60	M55×2.0	29	66	20	22.75	9.25	32	29.25	26	2	12	16	5	3-M 6	116	15	82.563
B-208A6	210	103	170	133.4	6-M12	52	31.5	15.5	20.5	30	66	M60×2.0	39	95	25	29.75	14.75	38.7	35	35	2	14	18	5	3-M 6	150	17	106.375
B-210A6	254	120	220	133.4	6-M16	75	33.5	14.5	25	45	94	M85×2.0	43	110	30	33.75	14.25	51	46.6	40	2	16	18.5	5	6-M12	171.4	25	106.375
B-210A8	254	113	220	171.4	6-M16	75	26.5	7.5	25	45	94	M85×2.0	43	110	30	33.75	14.25	51	46.6	40	2	16	24	5	3-M 8	190	18	139.719
B-212A6	304	129	220	133.4	6-M16	91	33	10	28	50	108	M90×2.0	51	111	30	45.75	15.75	61.3	56	50	2	21	18.5	6	6-M12	171.4	25	106.375
B-212A8	304	122	220	171.4	6-M16	91	26	3	28	50	108	M100×2.0	51	111	30	45.75	15.75	61.3	56	50	2	21	25	6	3-M 8	190	18	139.719

## Specifications

※Max. speed is shown using actual test data.

Specifications Model	Spindle nose size	Thru-Hole mm	Gripping range mm Max. Min.	Jaw Stroke (diameter) mm	Plunger Stroke mm	Max. Draw Bar Pull Force kN (kgf)	Max. Gripping Force kN (kgf)	Max. Gripping Force min <sup>1</sup> (r.p.m)	Net Weight with Soft top jaws kg	Moment of inertia kg·m <sup>2</sup>	Matching Cylinder	Max. pressure MPa (kgf/cm <sup>2</sup> )	Matching Hard top jaw	Matching Soft top jaw
B-206A5	A2-5	45	169 16	5.5	12	22 (2243)	57 (5812)	6000	13.7	0.063	S1246	2.80 (28.6)	HB06B1	SB06L1A
B-208A6	A2-6	52	210 13	7.4	16	34.8(3549)	86 (8769)	5000	23.6	0.178	S1552	2.65 (27)	HB08A1	SB08B1
B-210A6	A2-6	75	254 31	8.8	19	43 (4385)	111(11319)	4200	41.5	0.325	S1875	2.7 (27.5)	HB10A1	SB10B1
B-210A8	A2-8	75	254 31	8.8	19	43 (4385)	111(11319)	4200	40.0	0.323	S1875	2.7 (27.5)	HB10A1	SB10B1
B-212A6	A2-6	91	304 34	10.6	23	55 (5608)	144(14684)	3300	67.0	0.780	S2091	2.7 (27.5)	HB12N1	SB12N1
B-212A8	A2-8	91	304 34	10.6	23	55 (5608)	144(14684)	3300	64.0	0.765	S2091	2.7 (27.5)	HB12N1	SB12N1

Standard Chuck