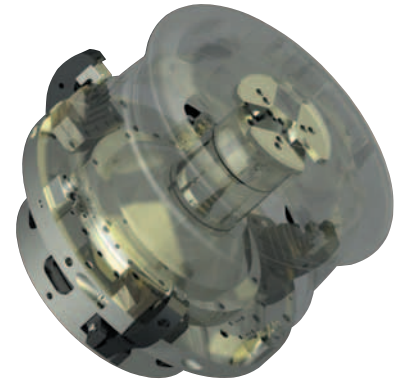




**CHUCK**

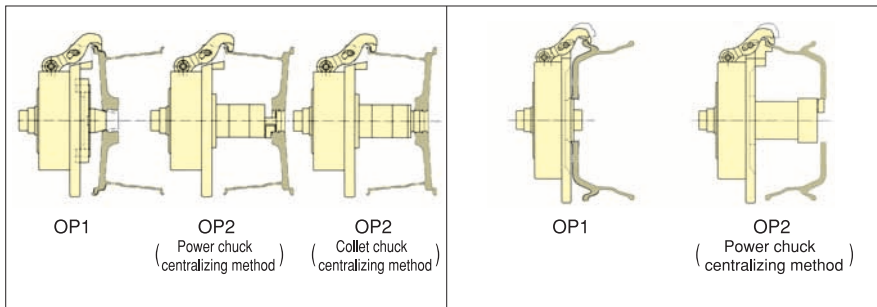
# Finger Chuck for Automotive Wheels FG-V series

**Rigid body  
Finger Chuck for aluminium wheel  
machining for automobiles**

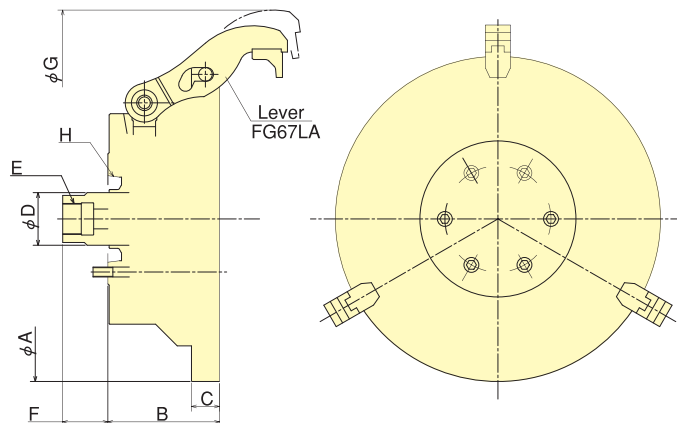


Advanced Chuck

## Gripping Examples



## Dimensional Drawings



## Dimensions

Model	A	B	C	D	E	F <sub>max.</sub>	F <sub>min.</sub>	G	H
FG50V	525	180	45	85	M50×1.5	73	38	675	A2-8
FG56V	575	180	45	85	M50×1.5	73	38	725	A2-11
FG62V	625	180	45	85	M50×1.5	73	38	775	A2-11

## Specifications

Model	Specs	Max. Draw Bar Pull Force kN(kgf)	Max. Speed min <sup>-1</sup>	Net Weight kg	Moment of inertia kg·m <sup>2</sup>	Open jaw stroke/Clamping stroke mm	Gripping force/jaw kN(kgf)
FG50V		30.0 (3059)	2500	135.0	3.750	18.5/16.5	9.5 (969)
FG56V		30.0 (3059)	2500	190.0	5.800	18.5/16.5	9.5 (969)
FG62V		30.0 (3059)	2500	220.0	8.800	18.5/16.5	9.5 (969)

## Measurement table for Wheel

Model	12"	13"	14"	15"	16"	17"	18"	19"	20"	21.5"	22.5"
FG50V		○	○	○	○	○	○				
FG56V		○	○	○	○	○	○	○	○		
FG62V					○	○	○	○	○	○	○