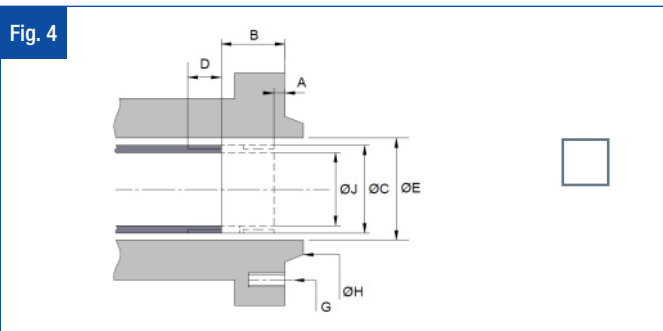
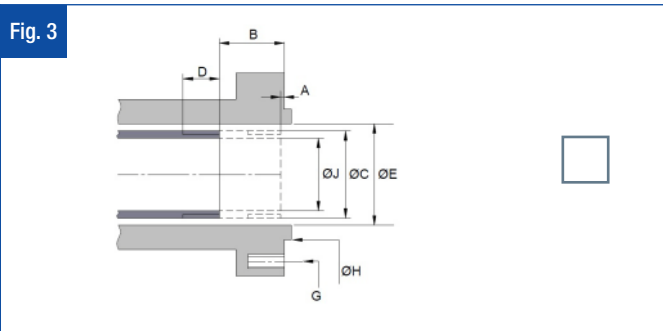
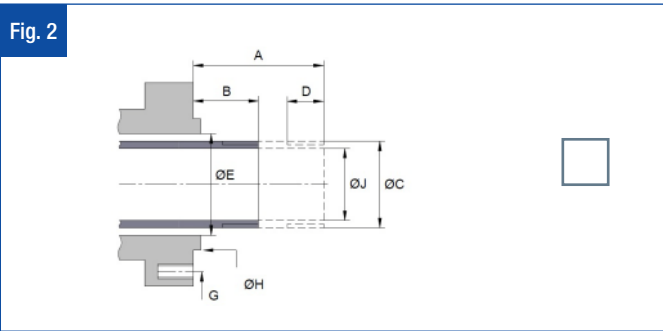
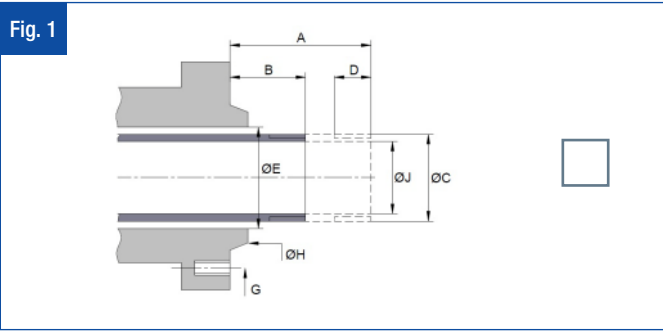


Data required to manufacture drawtube, chuck adaptor & threaded draw nut

Identify which figure represents your spindle



A) Forward position of (drawtube from spindle face)

B) Backward position of (drawtube from spindle face)

C) Thread diameter form and pitch
State if right hand or left hand and external or internal

D) Operative length of full thread

E) Spindle bore diameter
State if tapered

G) Fixing details. Thread size =

PCD = _____ QTY = _____

Spacing = _____

J) Drawtube internal diameter

American spindle mount
State type

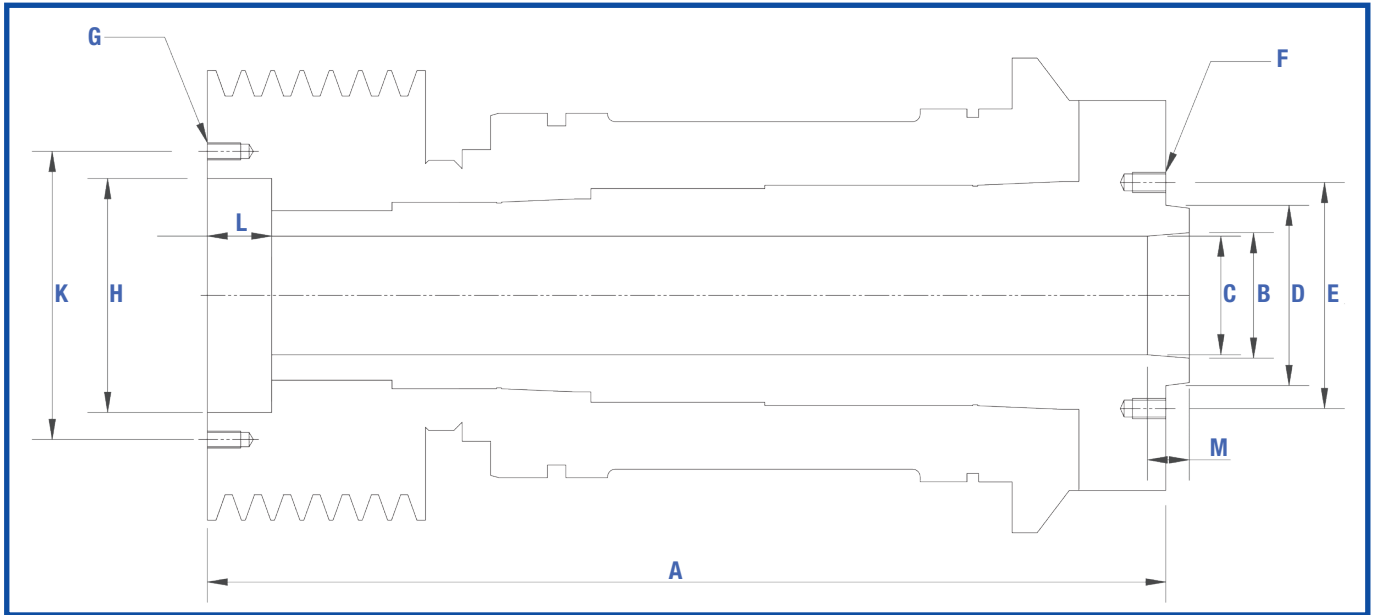
Straight spindle mount
State diameter

Drawtube Connector / Machine Spindle Information	
Machine Make:	
Model:	
Year:	
Chuck Make:	
Model:	
Serial Number:	
Cylinder Make:	
Model:	
Serial Number:	

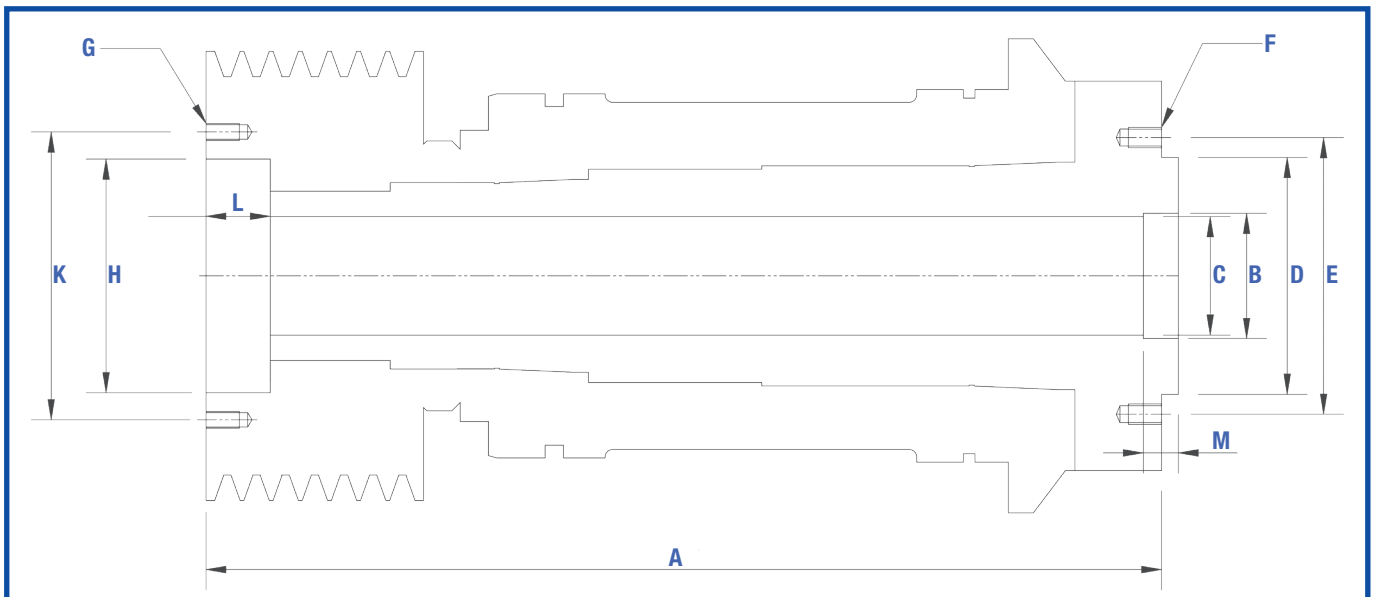
Contact Name:	Position:
Company Name:	
Address:	
Postal Code/ZIP:	Country:
Telephone:	Fax:
Email:	Website:

Data required to manufacture drawtube, chuck adaptor, threaded drawnut & cylinder adaptor

American Nose Spindle Type



Straight Nose Spindle Type



A	Spindle length (including adaptors)?	D	American or Straight spindle mount?	G	Thread size?	L	Cylinder location depth
B	Counterbore or taper?	E	Chuck Face Hole P.C.D?	H	Cylinder Location Diameter	M	Counterbore/Taper depth
C	Spindle bore diameter?	F	Thread size?	K	Cylinder Face Hole P.C.D?	Other details:	